



UK RETAIL TRAFFIC WEATHERMAP



FAIR



MODERATE



BRIGHT SPELLS



OVERCAST



VARIABLE TO STORMY



FREEZING

February 2020

This month

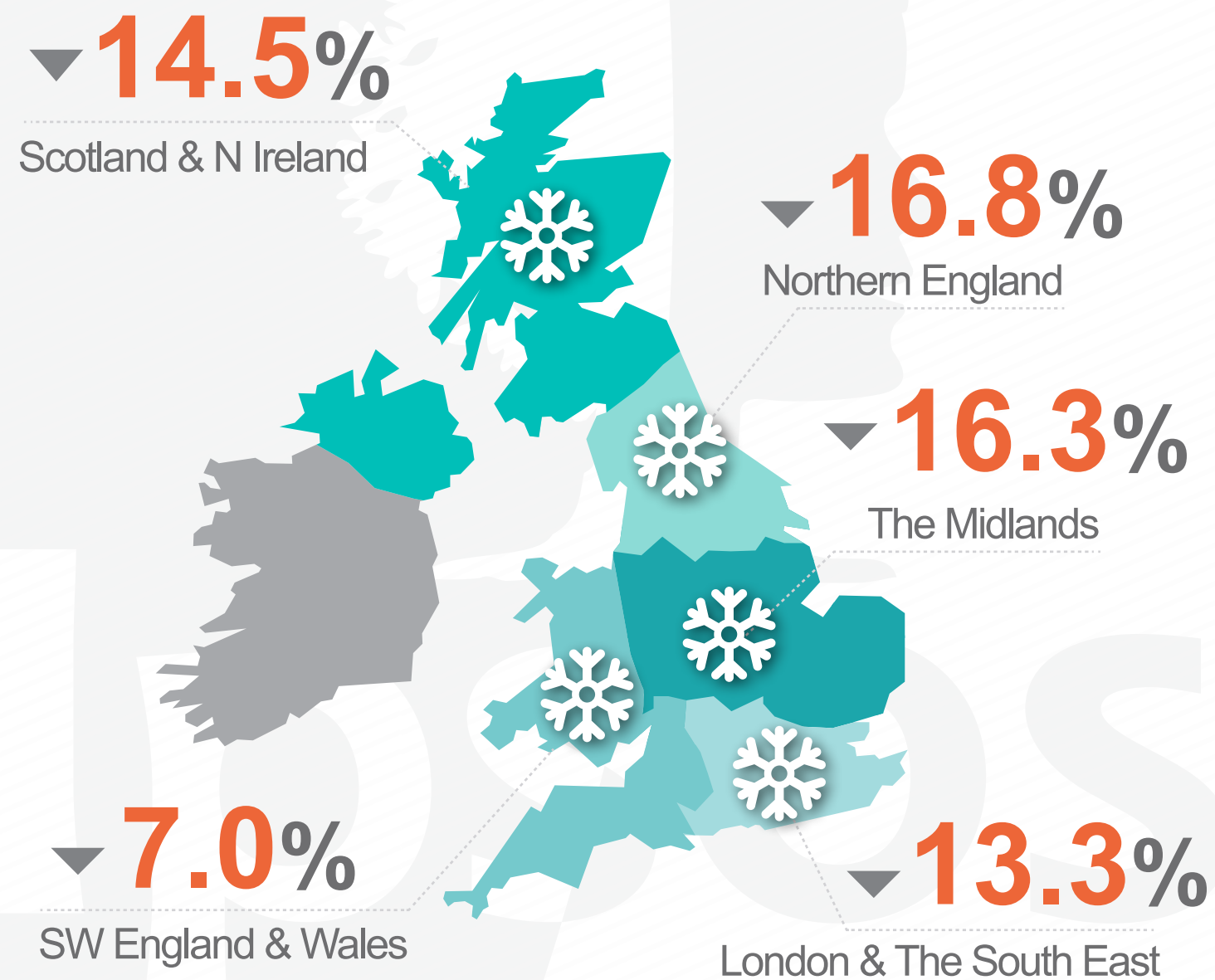
Impossible to predict the spread and response to the Coronavirus pandemic. Treat the forecast as optimistic.

Last month

Footfall levels sunk to an unprecedented low, battered by storms Ciara, Dennis and Jorge

YEAR-ON-YEAR-CHANGE

February 2020 VS February 2019

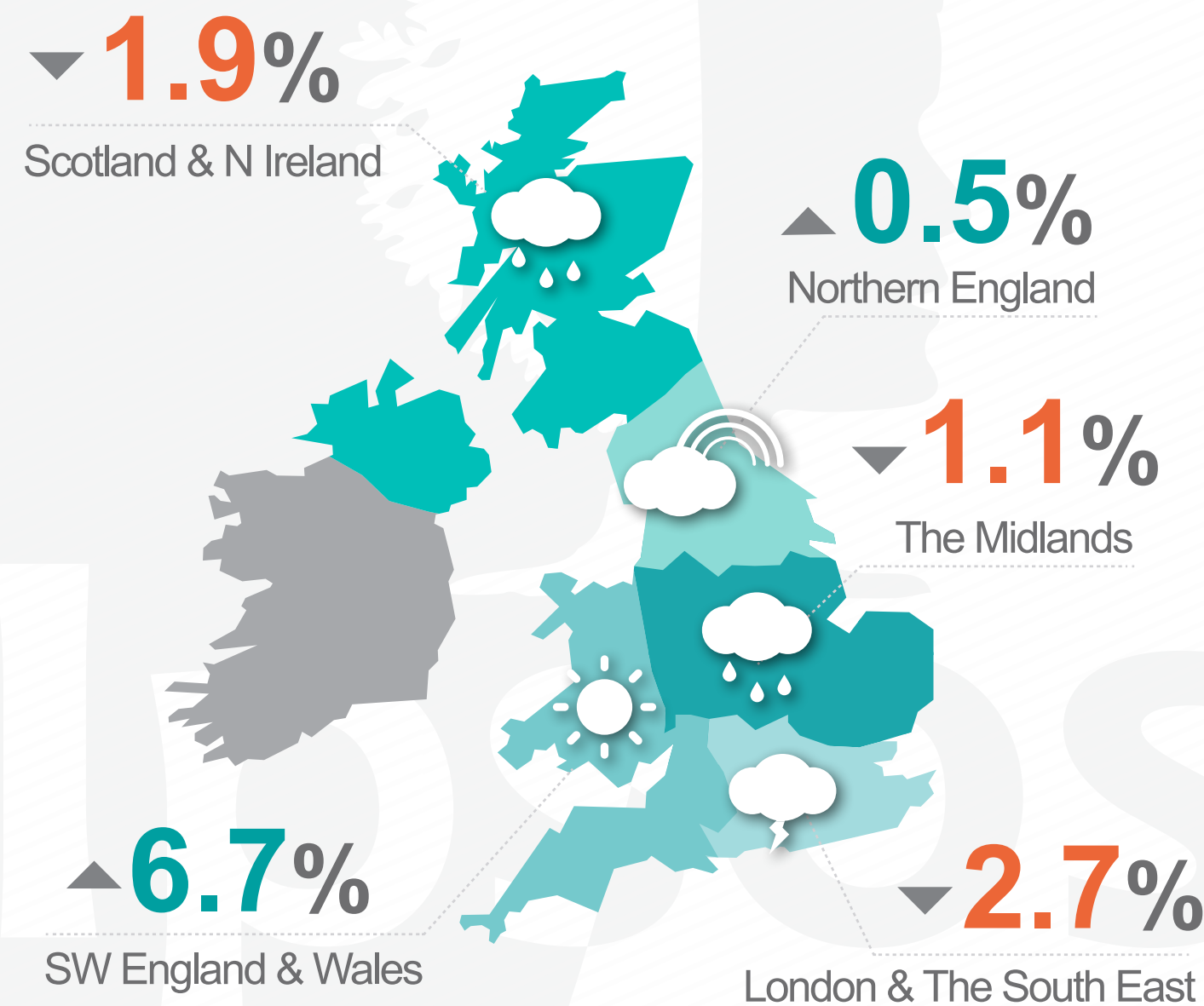


UK OVERALL

-14.2%

MONTH-ON-MONTH CHANGE

February 2020 VS January 2020

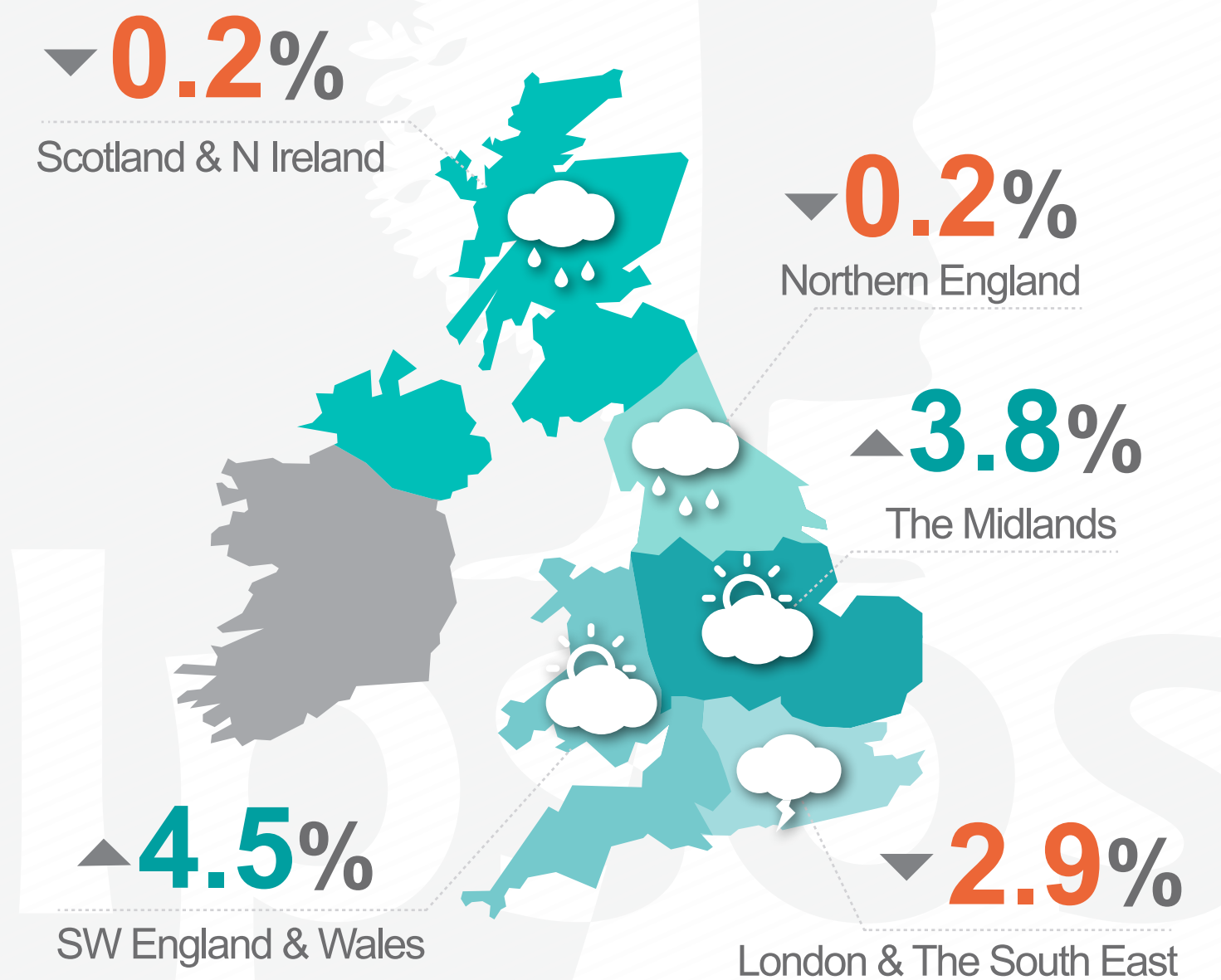


REGIONAL VARIATIONS AGAINST UK OVERALL OF

-23.0%

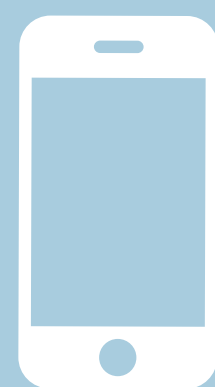
FORECAST FOR THIS MONTH

March 2020 VS February 2020



REGIONAL VARIATIONS AGAINST A PREDICTED UK OVERALL OF

-6.3%



For a detailed explanation visit Ipsos Retail Performance at www.ipsos-retailperformance.com
+44 (0)1908 682700 option 1 → 2