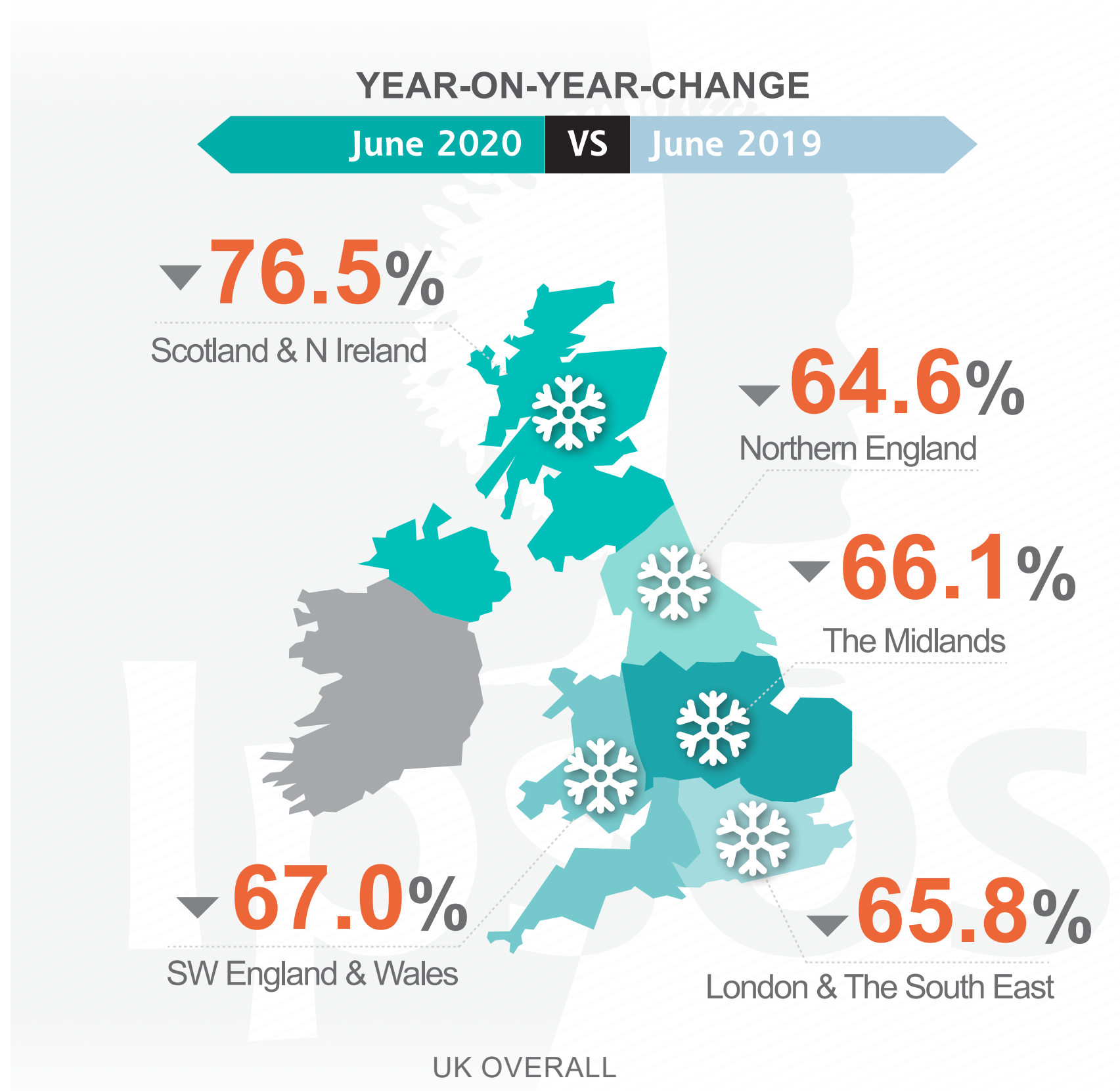
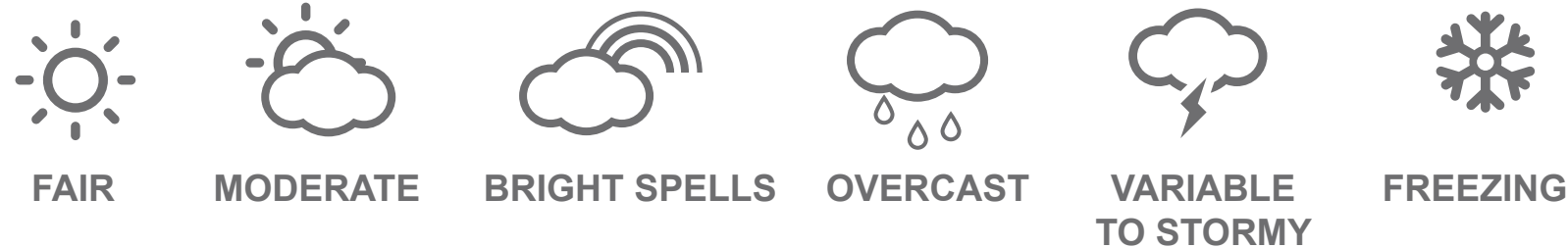




UK RETAIL TRAFFIC WEATHERMAP

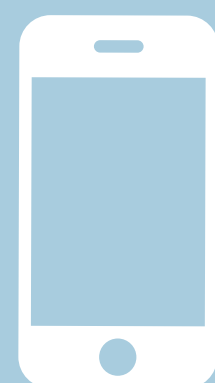


June 2020

Last Month

There was a gradual improvement in footfall week-on-week after stores began opening up, but shoppers' caution over safety procedures and retailers' steps to limit numbers in store at any one time mean that footfall levels will remain subdued for the foreseeable future.

Results are from the 15th June to 4th July.



For a detailed explanation visit Ipsos Retail Performance at www.ipsos-retailperformance.com
+44 (0)1908 682700 option 1 → 2