



UK RETAIL TRAFFIC WEATHERMAP



FAIR



MODERATE



BRIGHT SPELLS



OVERCAST



VARIABLE TO STORMY



FREEZING

August 2020

This month

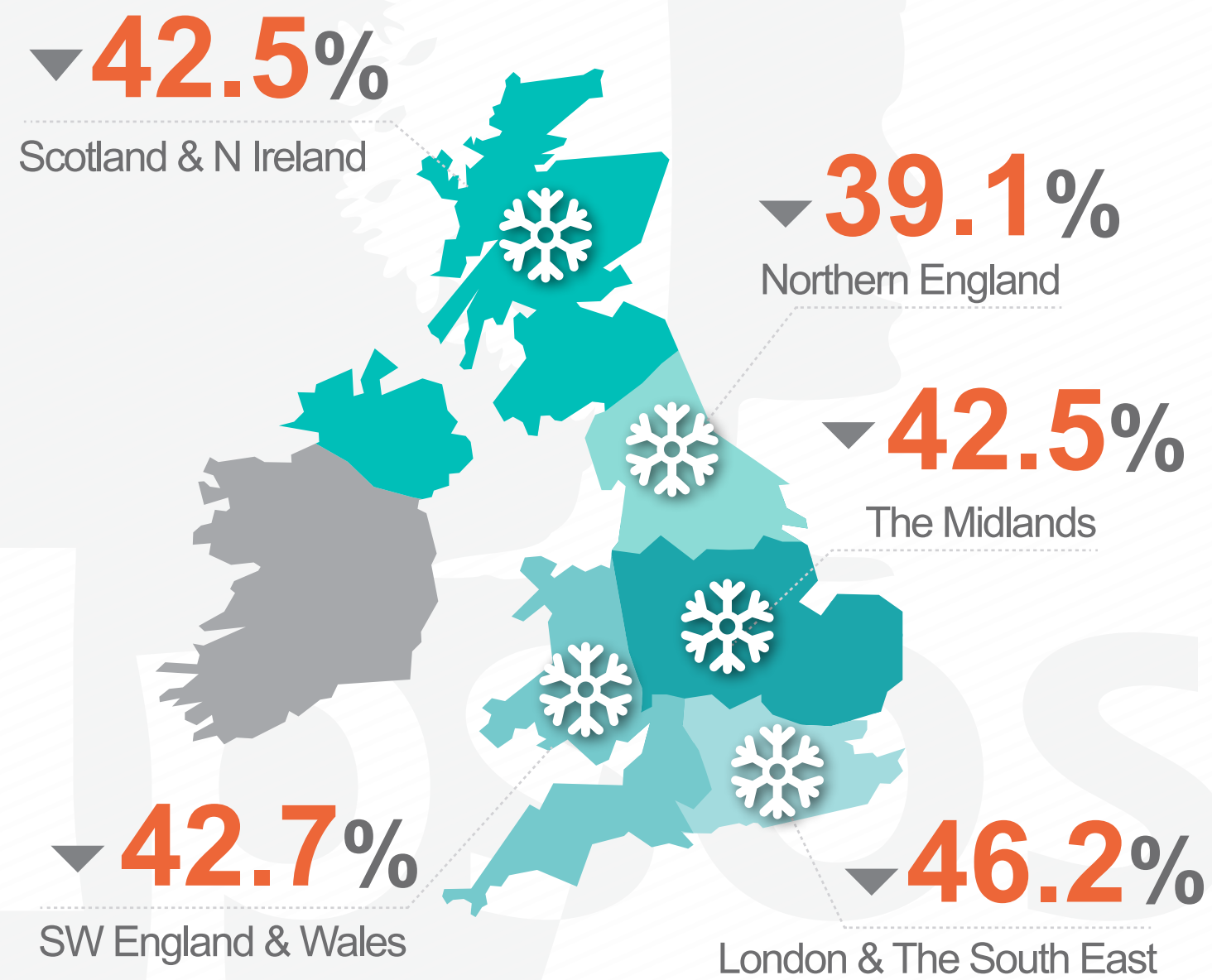
September heralds the start of the key period in the retail year, but expect a stutter in the recovery this month.

Last month

The step forward was considerably better than predicted with footfall growing each consecutive week in the month.

YEAR-ON-YEAR-CHANGE

August 2020 VS August 2019

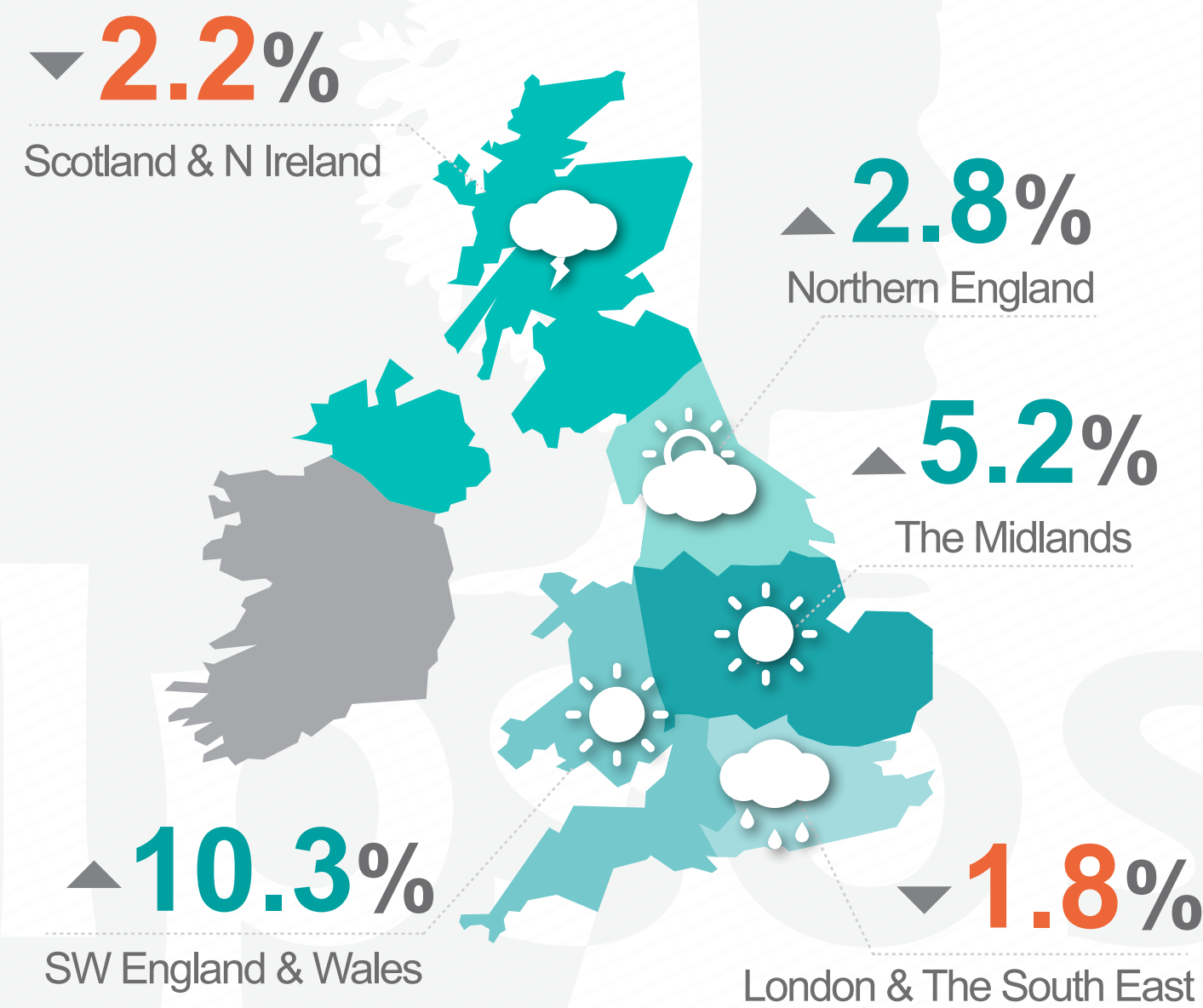


UK OVERALL

-41.7%

MONTH-ON-MONTH CHANGE

August 2020 VS July 2020

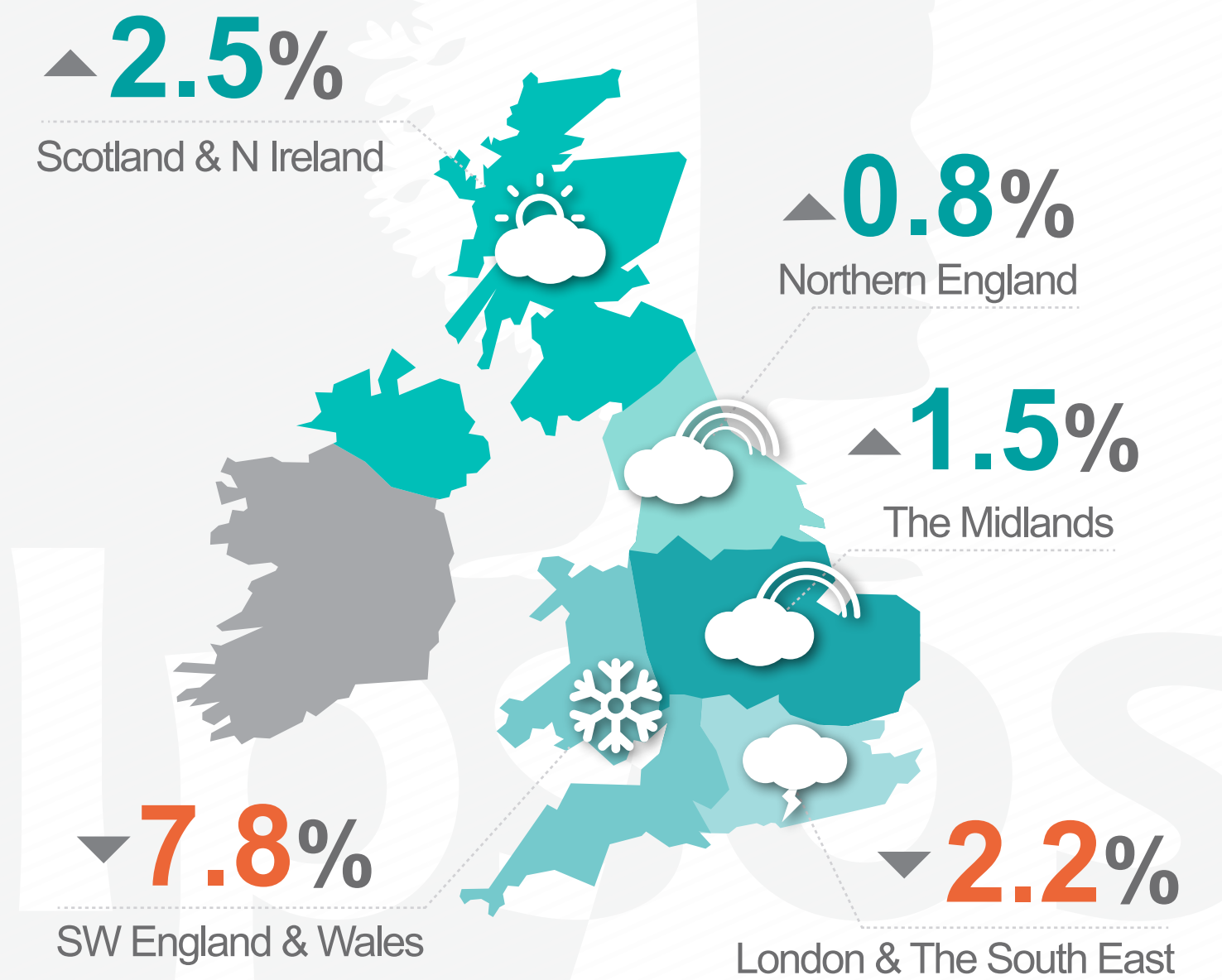


REGIONAL VARIATIONS AGAINST UK OVERALL OF

+18.8%

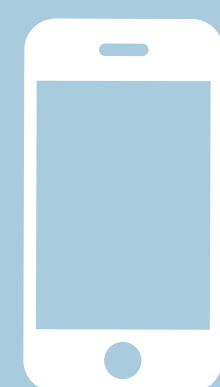
FORECAST FOR THIS MONTH

September 2020 VS August 2020



REGIONAL VARIATIONS AGAINST A PREDICTED UK OVERALL OF

-9.7%



For a detailed explanation visit Ipsos Retail Performance at www.ipsos-retailperformance.com
+44 (0)1908 682700 option 1 → 2