



UK RETAIL TRAFFIC WEATHERMAP

October 2020



FAIR



MODERATE



BRIGHT SPELLS



OVERCAST



VARIABLE TO STORMY



FREEZING

This month

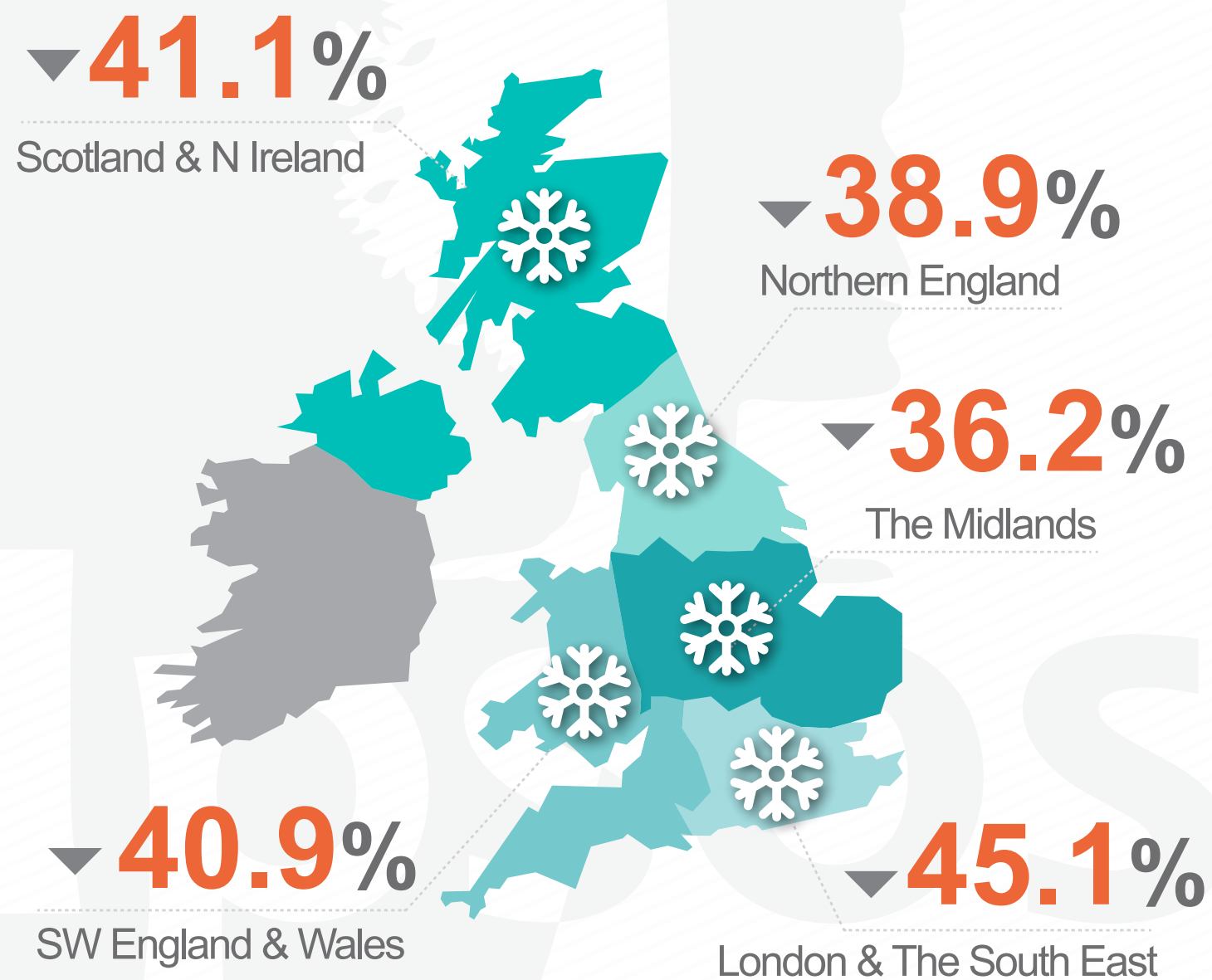
Last month

We have suspended our forecast for November given the closure of non-essential stores in England and the fluid picture elsewhere

Shoppers continued to recover their confidence in returning to the high street in October. By the month end, the level was back up to almost two thirds of 2019.

YEAR-ON-YEAR-CHANGE

October 2020 VS October 2019

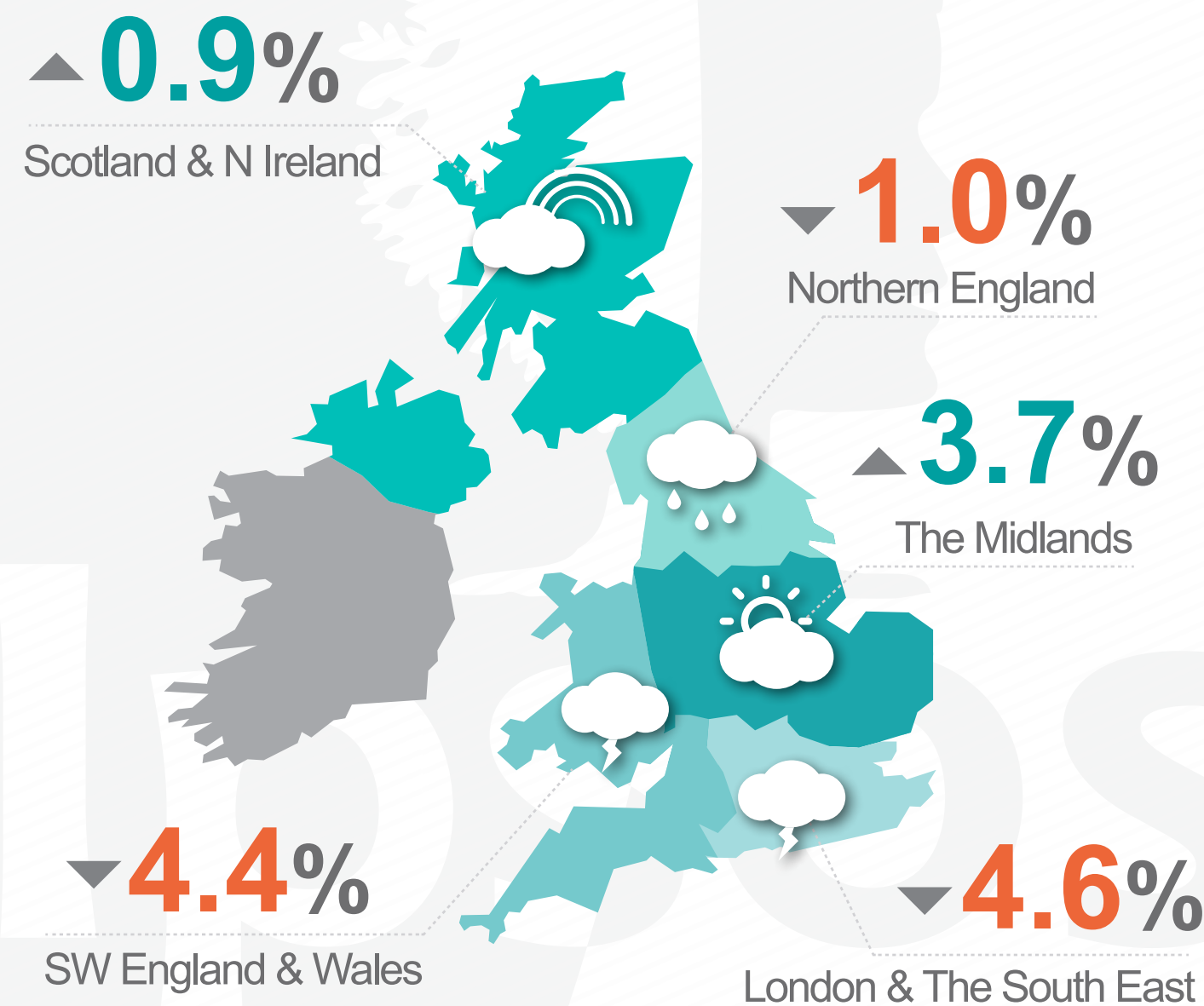


UK OVERALL

▼ 38.8%

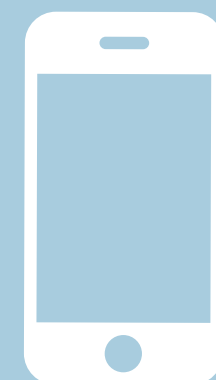
MONTH-ON-MONTH CHANGE

October 2020 VS September 2020



REGIONAL VARIATIONS AGAINST UK OVERALL OF

▲ 3.2%



For a detailed explanation visit Ipsos Retail Performance at www.ipsos-retailperformance.com
+44 (0)1908 682700 option 1 → 2