



UK RETAIL TRAFFIC WEATHERMAP

April 2021

(3 weeks to w/c 25/04/21)



FAIR



MODERATE



BRIGHT SPELLS



OVERCAST



VARIABLE TO STORMY



FREEZING

Last month

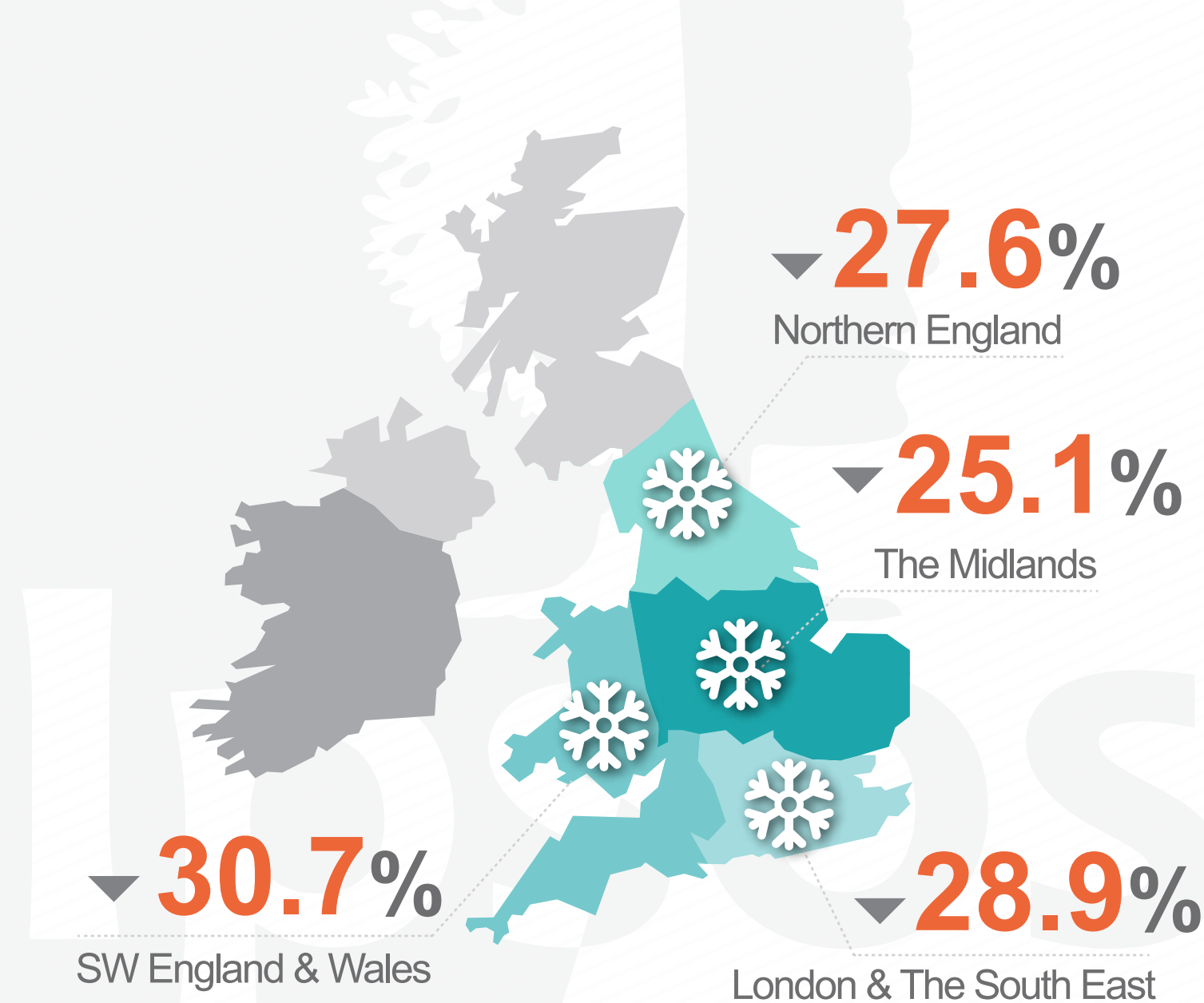
This month

Footfall continued to show a progressive comeback after the latest of retail's three lockdowns

The gentle recovery should continue, as the return of the hospitality and leisure sectors promote footfall, assuming no new curbs are introduced.

YEAR-ON-YEAR-CHANGE

April 2021 VS April 2019

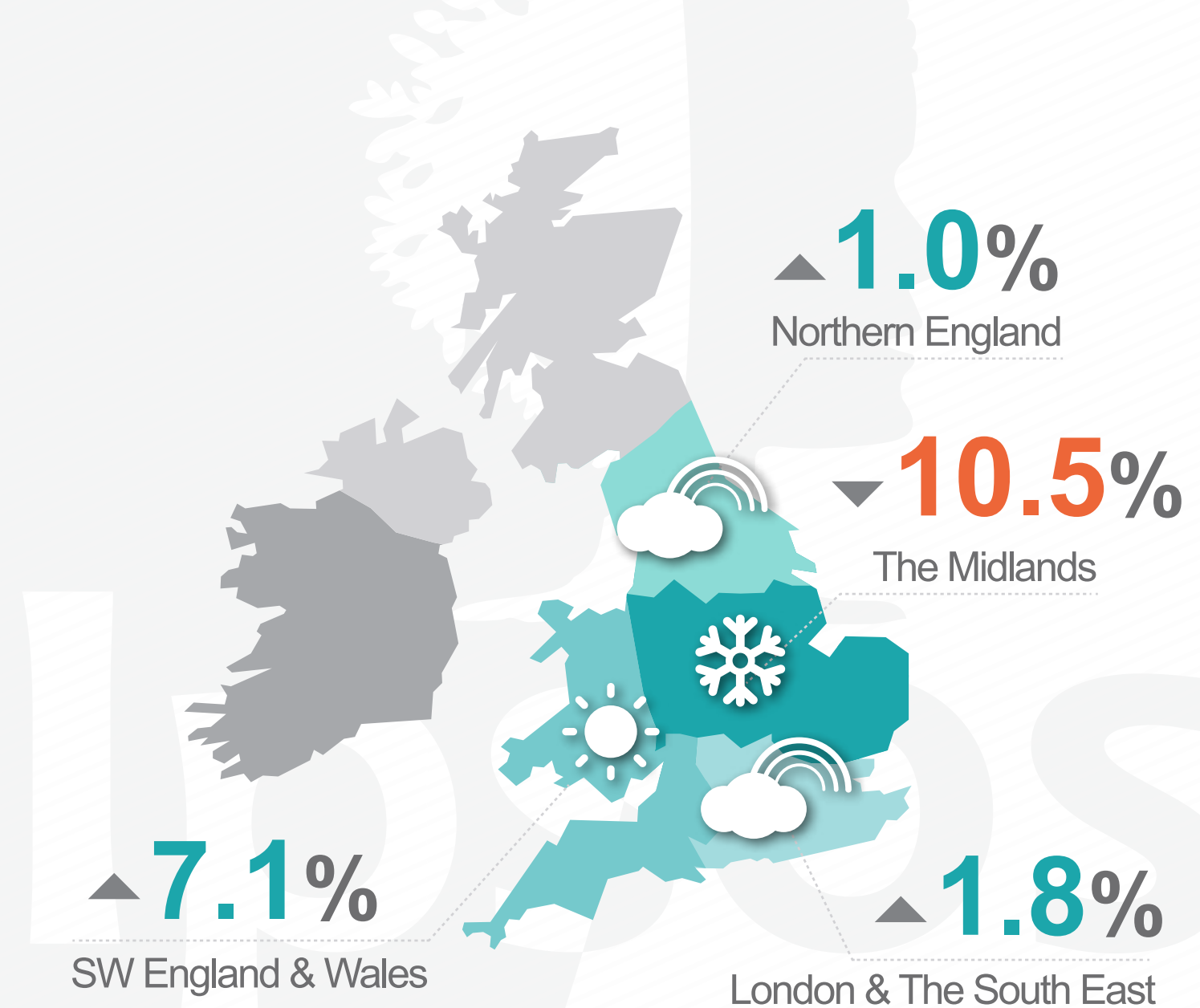


ENGLAND & WALES OVERALL

▼ 27.7%

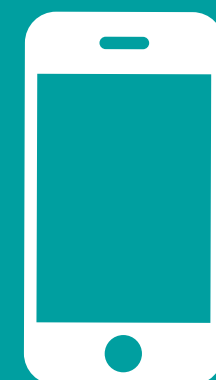
FORECAST FOR THIS MONTH

May 2021 VS April 2021



REGIONAL VARIATIONS AGAINST A PREDICTED ENGLAND & WALES AVERAGE OF

▲ 2.9%



For a detailed explanation visit:

www.ipsos-retailperformance.com

+44 (0)1908 682700 option 1 → 2