



# UK RETAIL TRAFFIC WEATHERMAP



FAIR



MODERATE



BRIGHT SPELLS



OVERCAST



VARIABLE TO STORMY



FREEZING

## May 2021

Last month

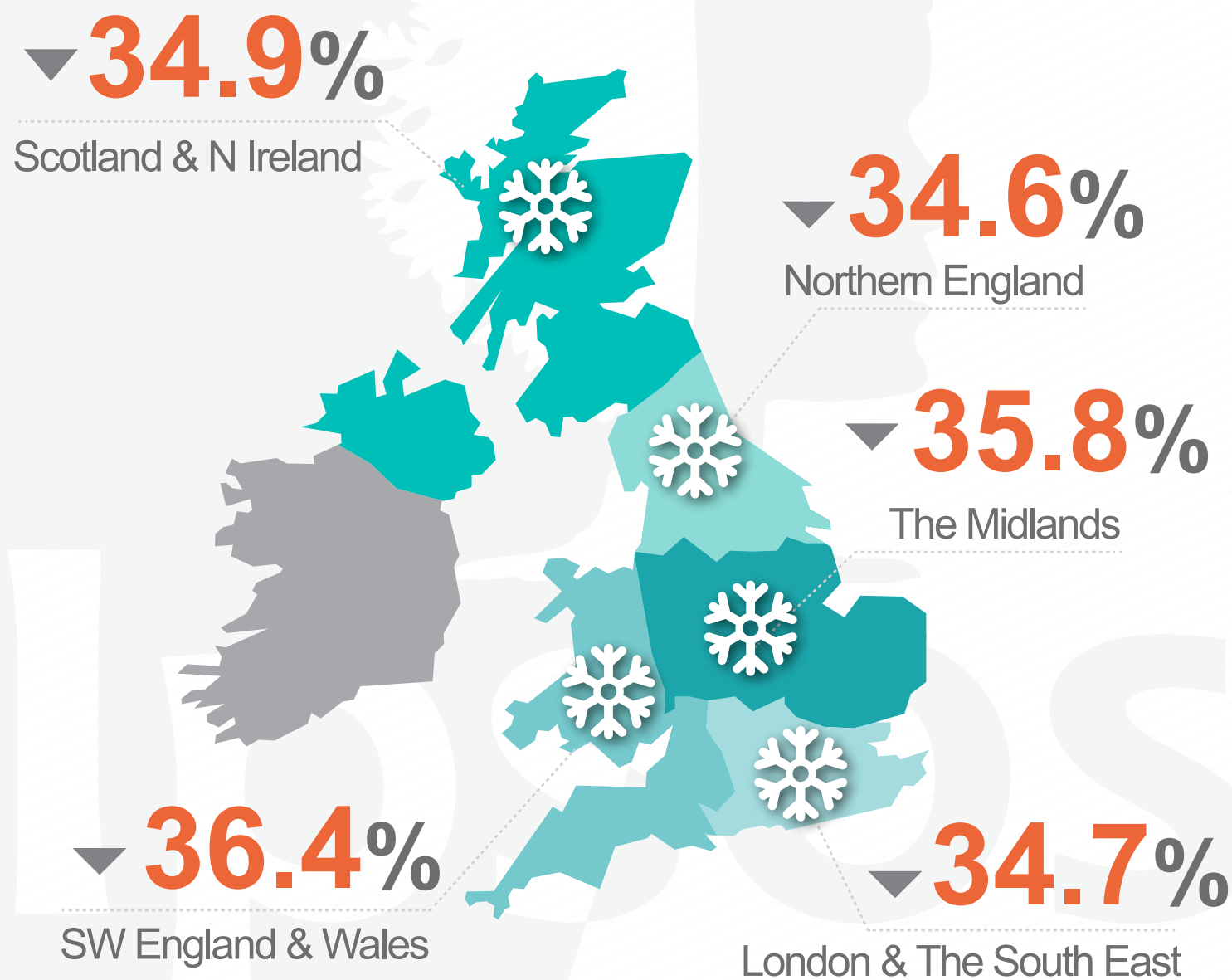
This month

May's footfall slipped back slightly after April's re-opening.

Expect footfall to continue to strengthen as summer arrives and confidence grows.

### YEAR-ON-YEAR-CHANGE

May 2021 VS May 2019

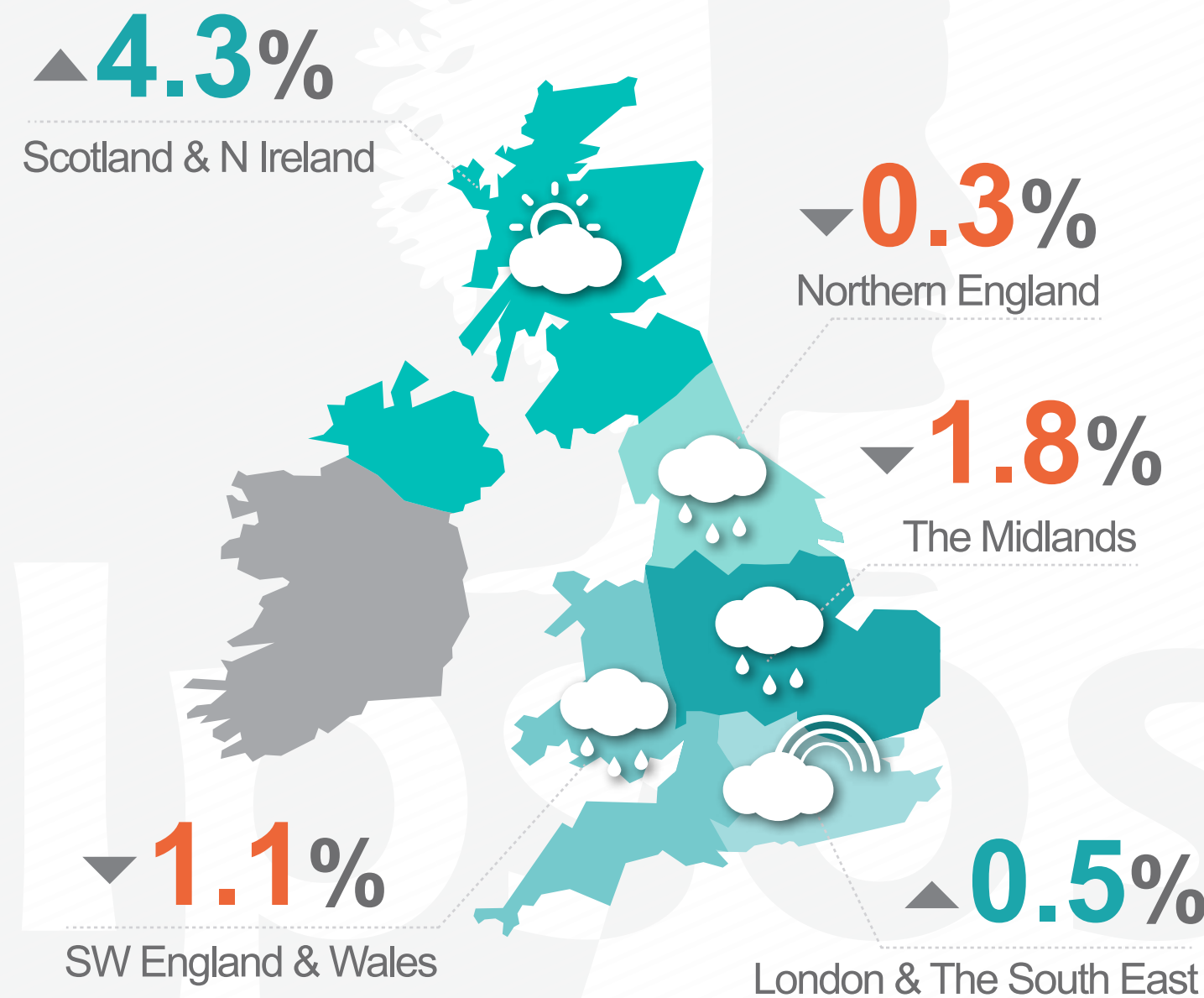


ENGLAND & WALES OVERALL

**-34.7%**

### MONTH-ON-MONTH CHANGE MAY 2021 VS APRIL 2021 (3 WEEKS)

May 2021 VS April 2021



REGIONAL VARIATIONS AGAINST A PREDICTED ENGLAND & WALES AVERAGE OF

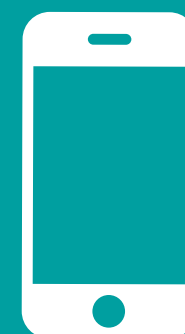
**-2.1%**

### FORECAST FOR THIS MONTH JUNE 2021 VS MAY 2021:

**+13.5%**

### FORECAST FOR THIS MONTH JUNE 2021 VS JUNE 2019:

**-29.9%**



For a detailed explanation visit:

[www.ipsos-retailperformance.com](http://www.ipsos-retailperformance.com)  
+44 (0)1908 682700 option 1 → 2