



UK RETAIL TRAFFIC WEATHERMAP



FAIR



MODERATE



BRIGHT SPELLS



OVERCAST



VARIABLE TO STORMY



FREEZING

June 2021

Last month

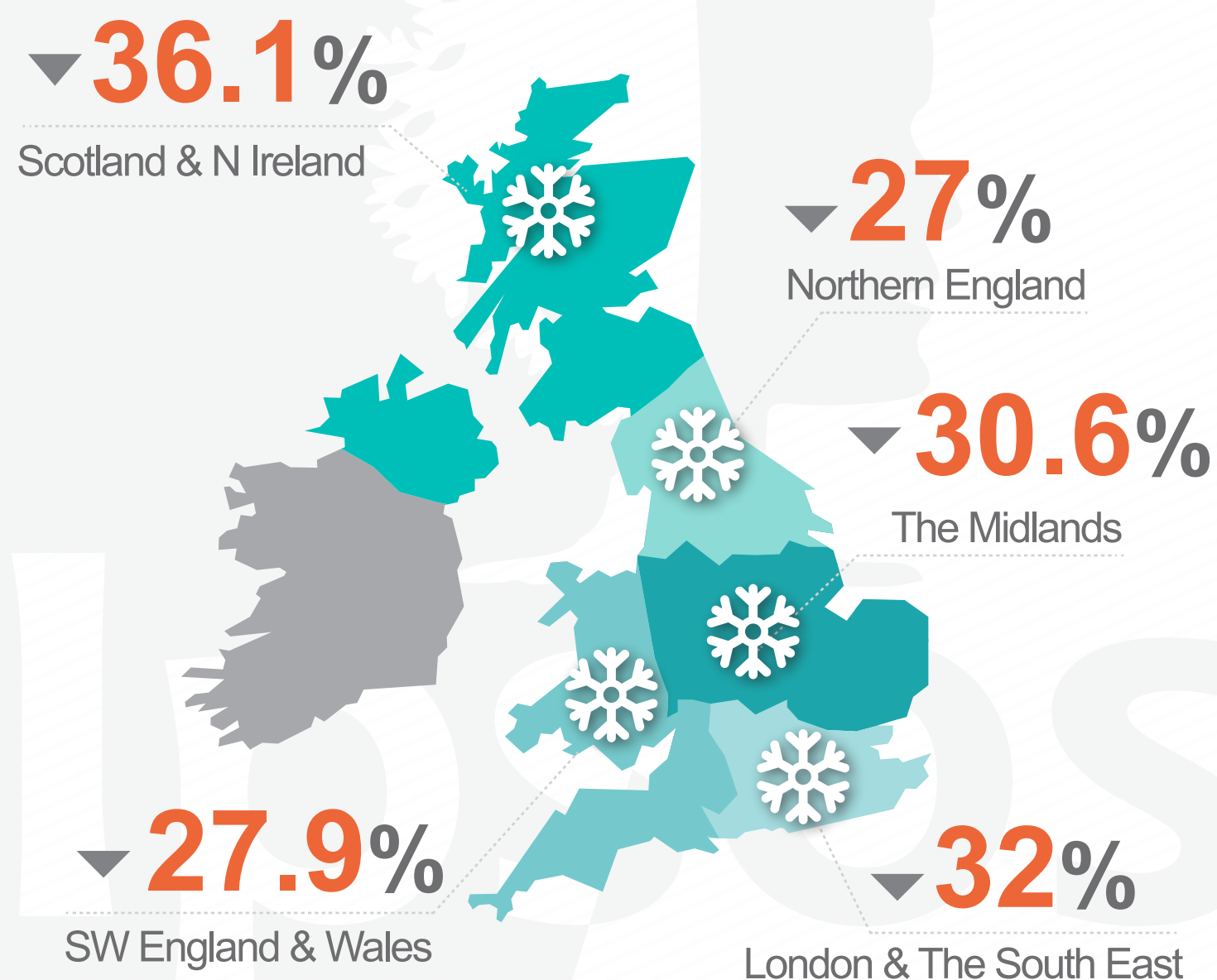
This month

June's footfall improved in all regions when compared to May.

Another month of improvement is to be expected as restrictions are fully lifted.

YEAR-ON-YEAR-CHANGE

June 2021 VS June 2019

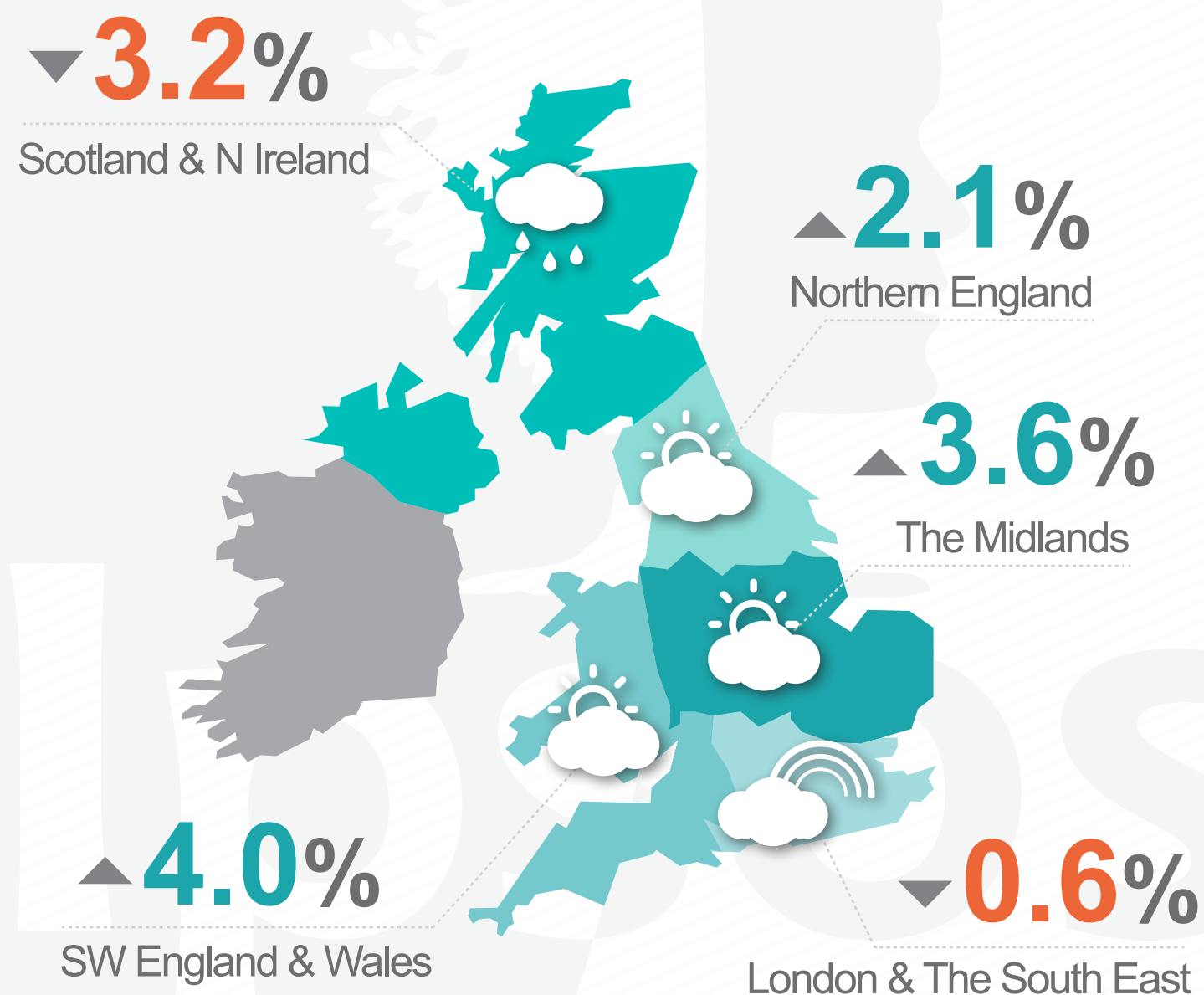


ENGLAND & WALES OVERALL

▼ 30.9%

MONTH-ON-MONTH CHANGE

June 2021 VS May 2021



REGIONAL VARIATIONS AGAINST A PREDICTED ENGLAND & WALES AVERAGE OF

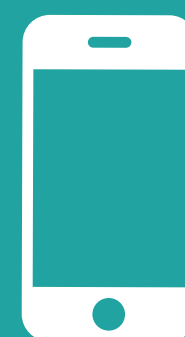
▲ 10.5%

FORECAST FOR THIS MONTH JULY 2021 VS JUNE 2021:

▲ 6.9%

FORECAST FOR THIS MONTH JULY 2021 VS JULY 2019:

▼ 28.3%



For a detailed explanation visit:

www.ipsos-retailperformance.com
+44 (0)1908 682700 option 1 → 2