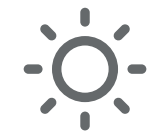




UK RETAIL TRAFFIC WEATHERMAP



FAIR



MODERATE



BRIGHT SPELLS



OVERCAST



VARIABLE TO STORMY



FREEZING

March 2022

March

April

Unseasonably warm weather provided a welcome boost to store visits. Local high streets continued to outperform cities

Rises in the cost of living could have an impact. However, this is likely to make real changes to the high street later in the year

YEAR-ON-YEAR-CHANGE

March 2022 VS March 2019

▼ **24.7%**

Scotland & N Ireland

▼ **18.6%**

Northern England

▼ **23.0%**

The Midlands

▼ **23.8%**

SW England & Wales

▼ **22.0%**

London & The South East

UK OVERALL

▼ **22.9%**

MONTH-ON-MONTH CHANGE

March 2022 VS February 2022

▲ **1.4%**

Scotland & N Ireland

▼ **1.2%**

Northern England

▲ **0.7%**

The Midlands

▼ **2.5%**

SW England & Wales

▲ **1.3%**

London & The South East

REGIONAL VARIATIONS AGAINST A UK AVERAGE OF

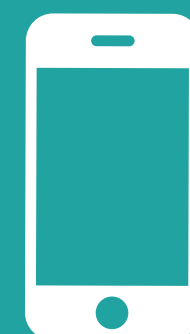
▲ **9.9%**

FORECAST FOR APRIL 2022 VS MARCH 2022

▲ **4.3%**

FORECAST FOR APRIL 2022 VS APRIL 2019

▼ **22.1%**



For a detailed explanation visit:

www.ipsos.com/en/people-counting
+44 (0)1908 682700 option 1 > 2

