



UK RETAIL TRAFFIC WEATHERMAP



FAIR



MODERATE



BRIGHT SPELLS



OVERCAST



VARIABLE TO STORMY



FREEZING

April 2022

April

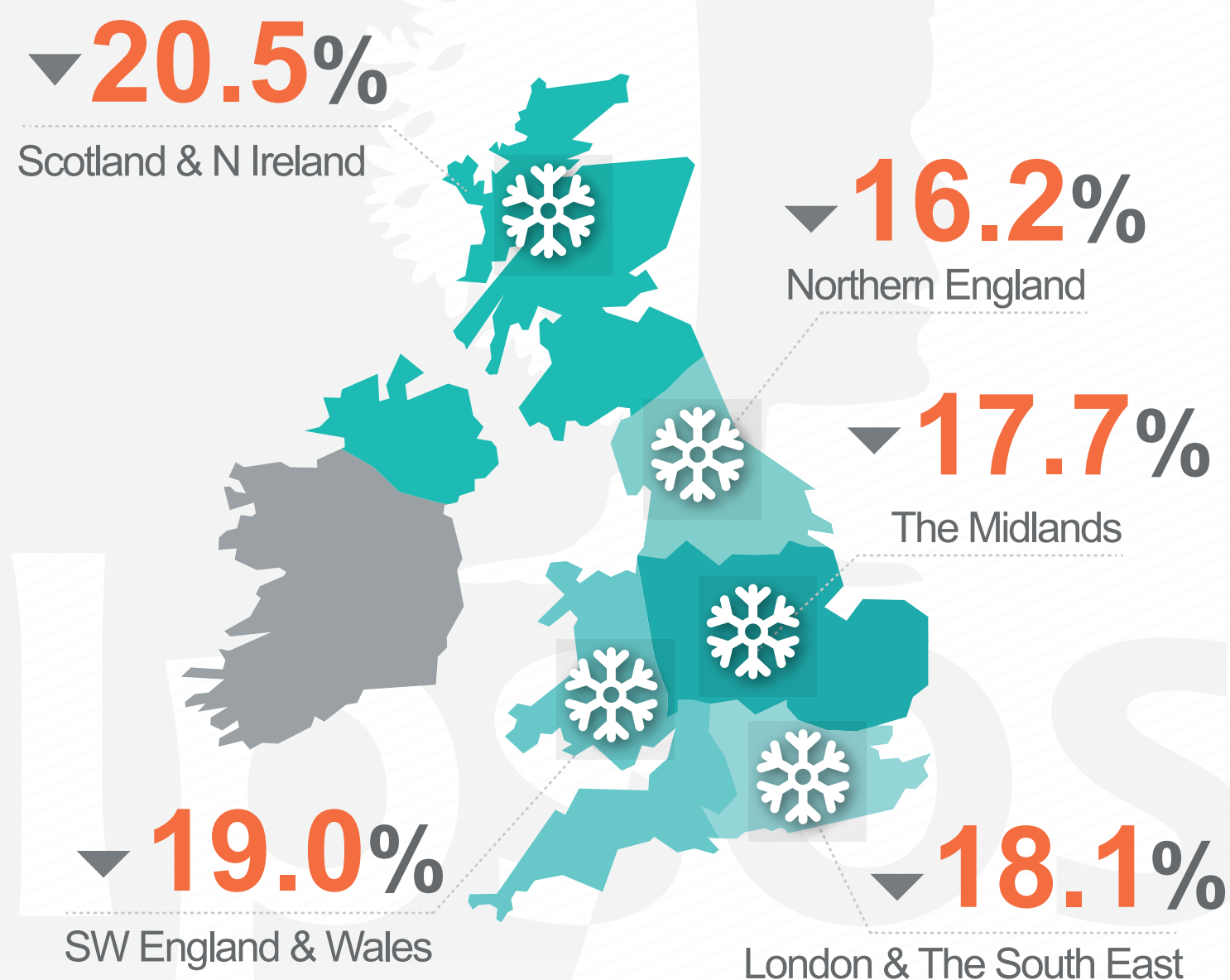
May

Warm weather and the Easter bank holiday had a positive impact on footfall across the UK. Many were shopping for the holidays and weddings that were postponed due to the pandemic

Expect another positive month as people look to make the most of their freedom. Rising costs will take time to have a negative impact on non-food sector store visits

YEAR-ON-YEAR-CHANGE

April 2022 VS April 2019

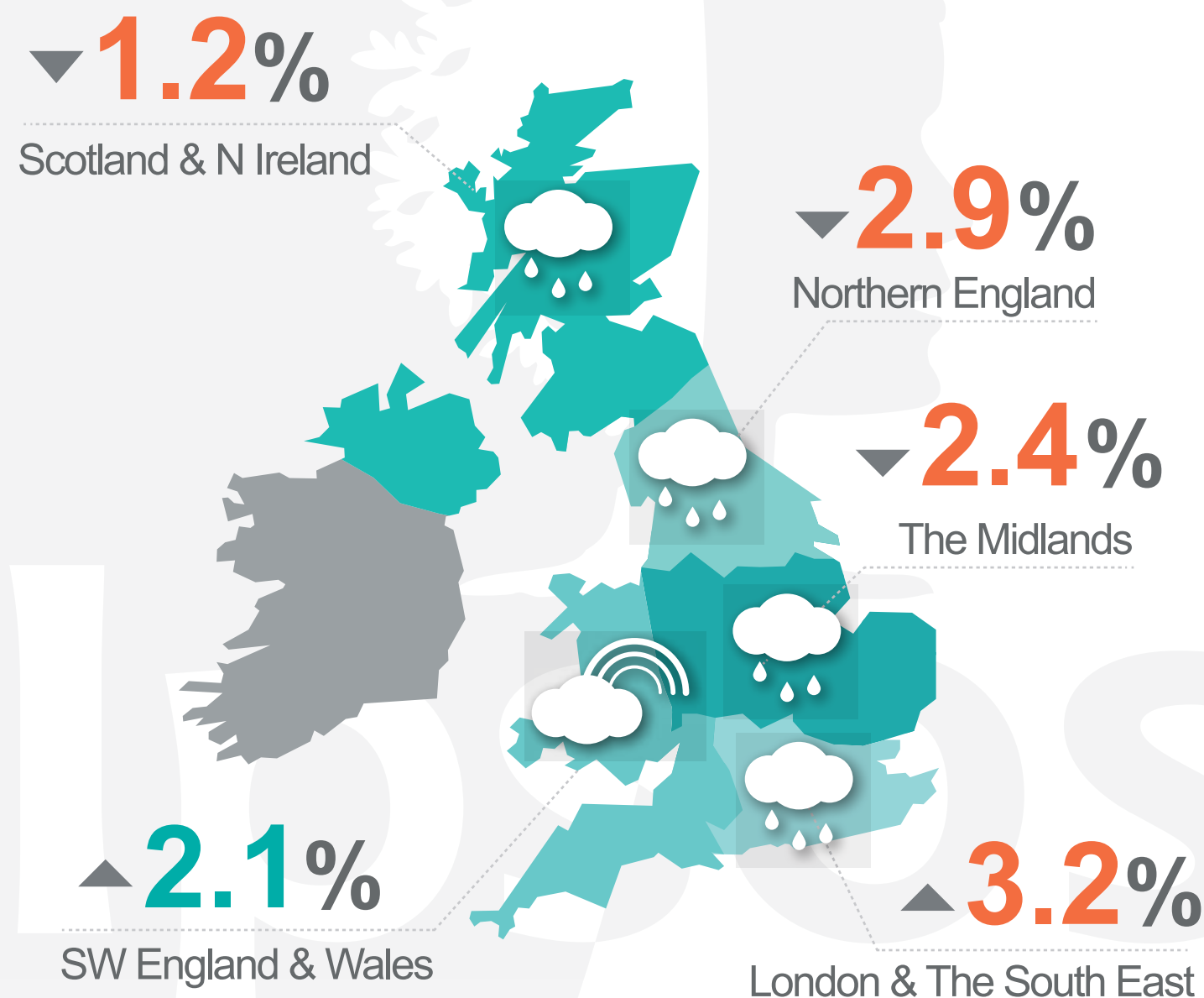


UK OVERALL

▼ **17.4%**

MONTH-ON-MONTH CHANGE

April 2022 VS March 2022



REGIONAL VARIATIONS AGAINST A UK AVERAGE OF

▲ **10.7%**

FORECAST FOR MAY 2022 V2 APRIL 2022

▲ **2.5%**

FORECAST FOR MAY 2022 VS MAY 2019

▼ **17.2%**



For a detailed explanation visit:

www.ipsos.com/en/people-counting
+44 (0)1908 682700 option 1 > 2

